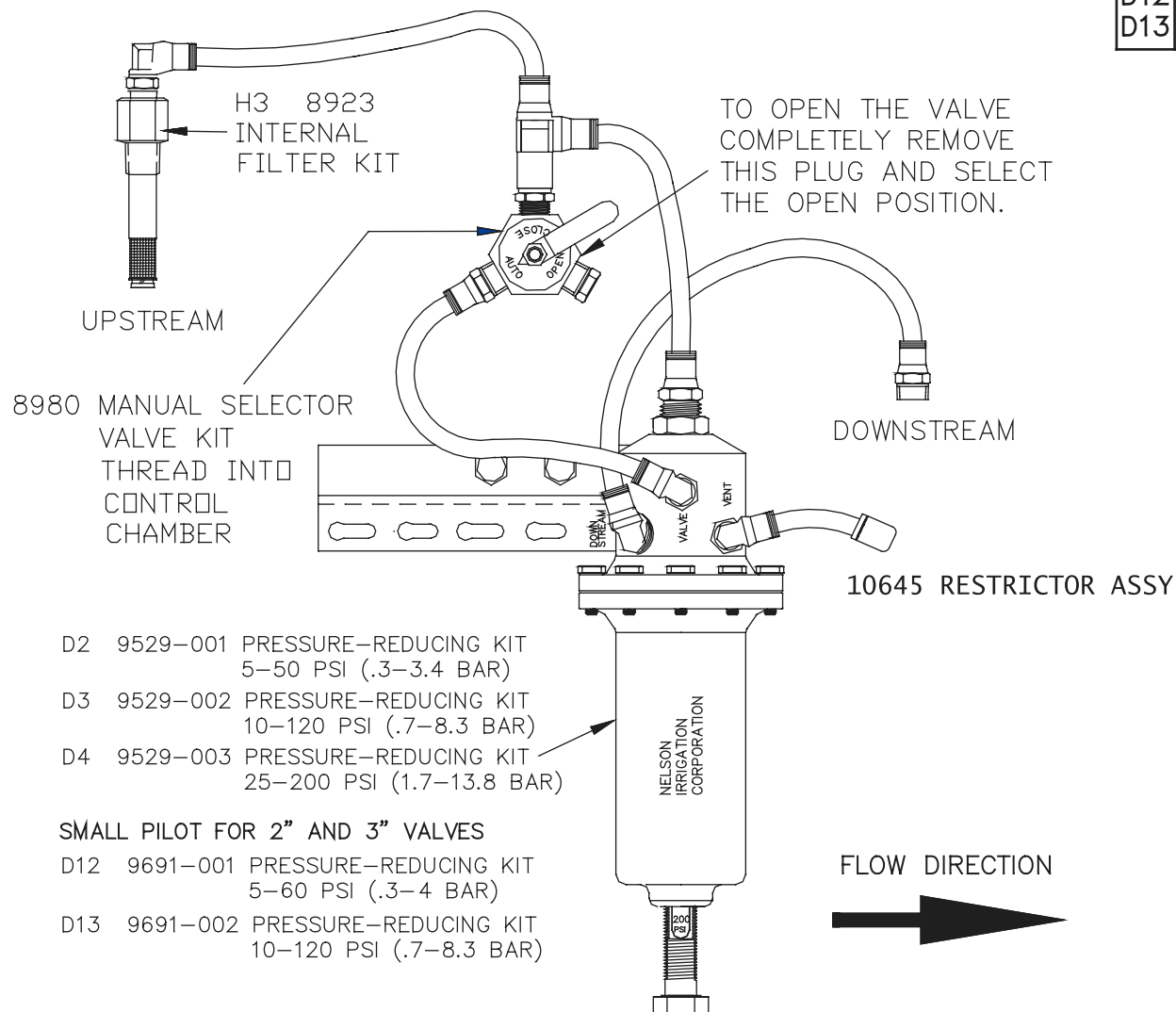


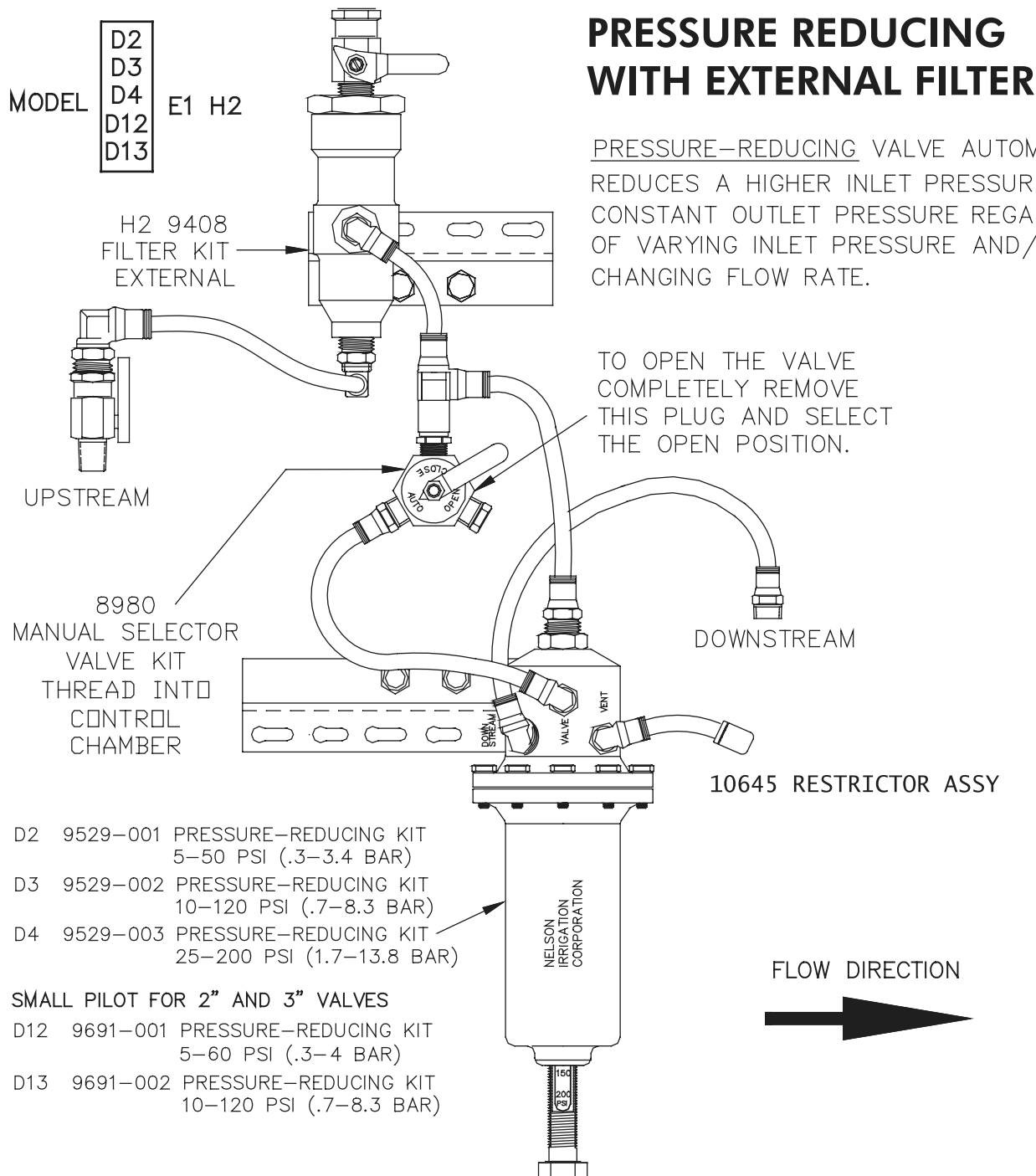
PRESSURE REDUCING WITH INTERNAL FILTER

PRESSURE-REDUCING VALVE AUTOMATICALLY REDUCES A HIGHER INLET PRESSURE TO A CONSTANT OUTLET PRESSURE REGARDLESS OF VARYING INLET PRESSURE AND/OR CHANGING FLOW RATE.

MODEL E1 H3

D2
D3
D4
D12
D13





- | | | |
|---|----------|--|
| D2 | 9529-001 | PRESSURE-REDUCING KIT
5-50 PSI (.3-3.4 BAR) |
| D3 | 9529-002 | PRESSURE-REDUCING KIT
10-120 PSI (.7-8.3 BAR) |
| D4 | 9529-003 | PRESSURE-REDUCING KIT
25-200 PSI (1.7-13.8 BAR) |
| SMALL PILOT FOR 2" AND 3" VALVES | | |
| D12 | 9691-001 | PRESSURE-REDUCING KIT
5-60 PSI (.3-4 BAR) |
| D13 | 9691-002 | PRESSURE-REDUCING KIT
10-120 PSI (.7-8.3 BAR) |

PRESSURE REDUCING WITH SOLENOID & INTERNAL FILTER

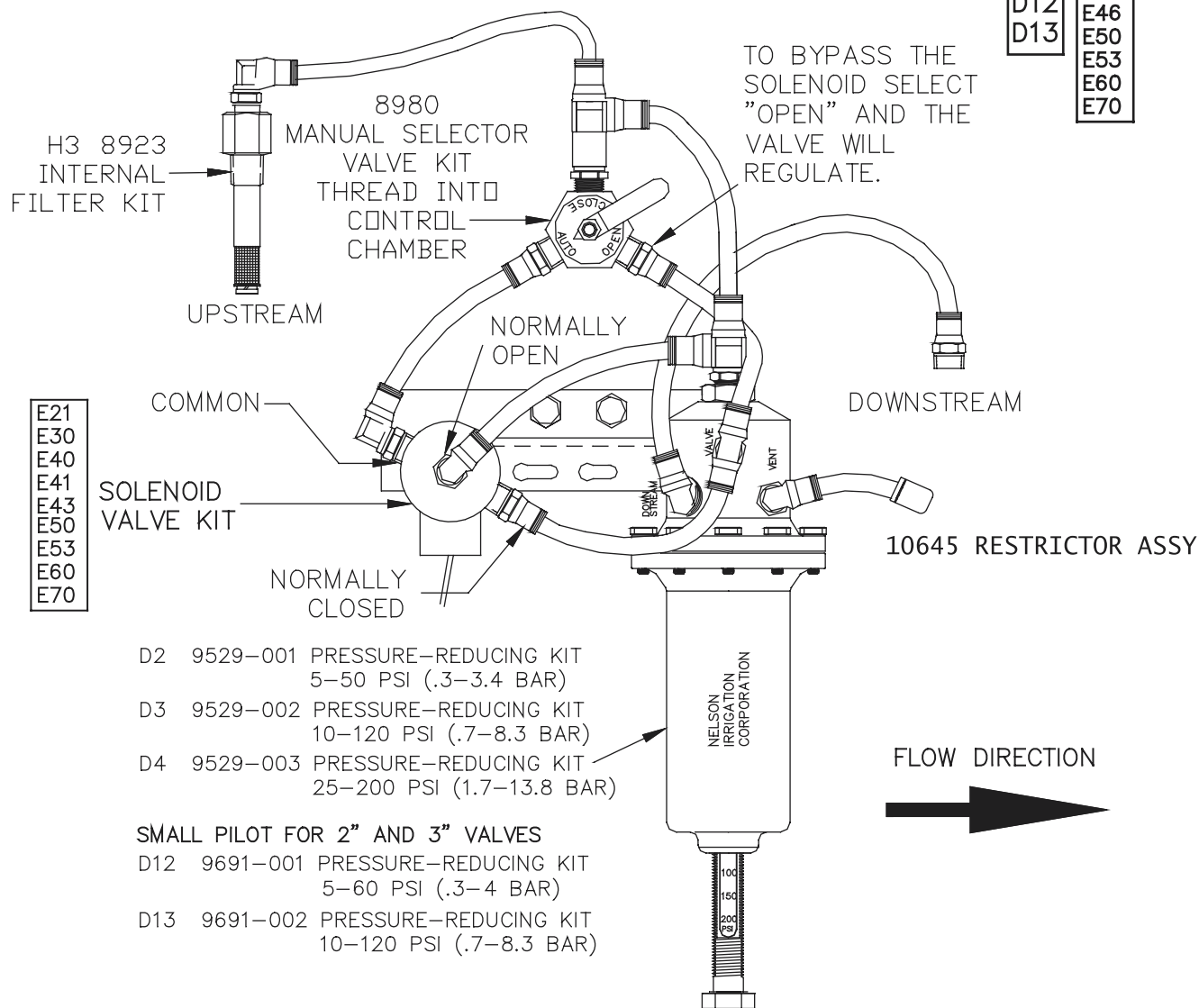
PRESSURE-REDUCING VALVE AUTOMATICALLY REDUCES A HIGHER INLET PRESSURE TO A CONSTANT OUTLET PRESSURE REGARDLESS OF VARYING INLET PRESSURE AND/OR CHANGING FLOW RATE.

SOLENOID CONTROL IS PROVIDED TO INTERCEPT THE OPERATION OF THE PRESSURE REDUCING CONTROL AND CLOSE THE MAIN VALVE.

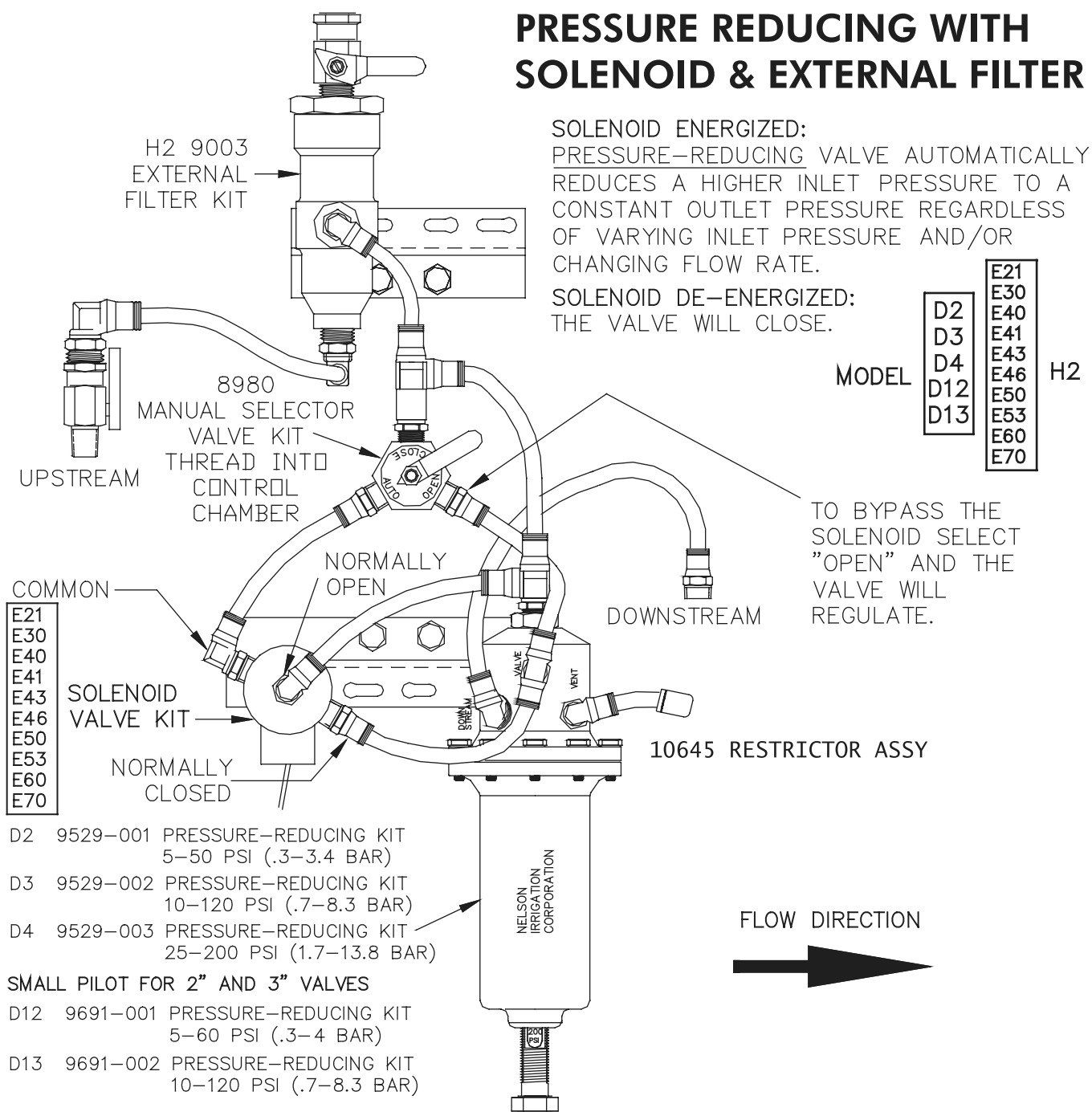
MODEL

D2	E21
D3	E30
D4	E40
D12	E41
D13	E43
	E46
	E50
	E53
	E60
	E70

H3



PRESSURE REDUCING WITH SOLENOID & EXTERNAL FILTER



SOLENOID ENERGIZED:
 PRESSURE-REDUCING VALVE AUTOMATICALLY
 REDUCES A HIGHER INLET PRESSURE TO A
 CONSTANT OUTLET PRESSURE REGARDLESS
 OF VARYING INLET PRESSURE AND/OR
 CHANGING FLOW RATE.

SOLENOID DE-ENERGIZED:
 THE VALVE WILL CLOSE.

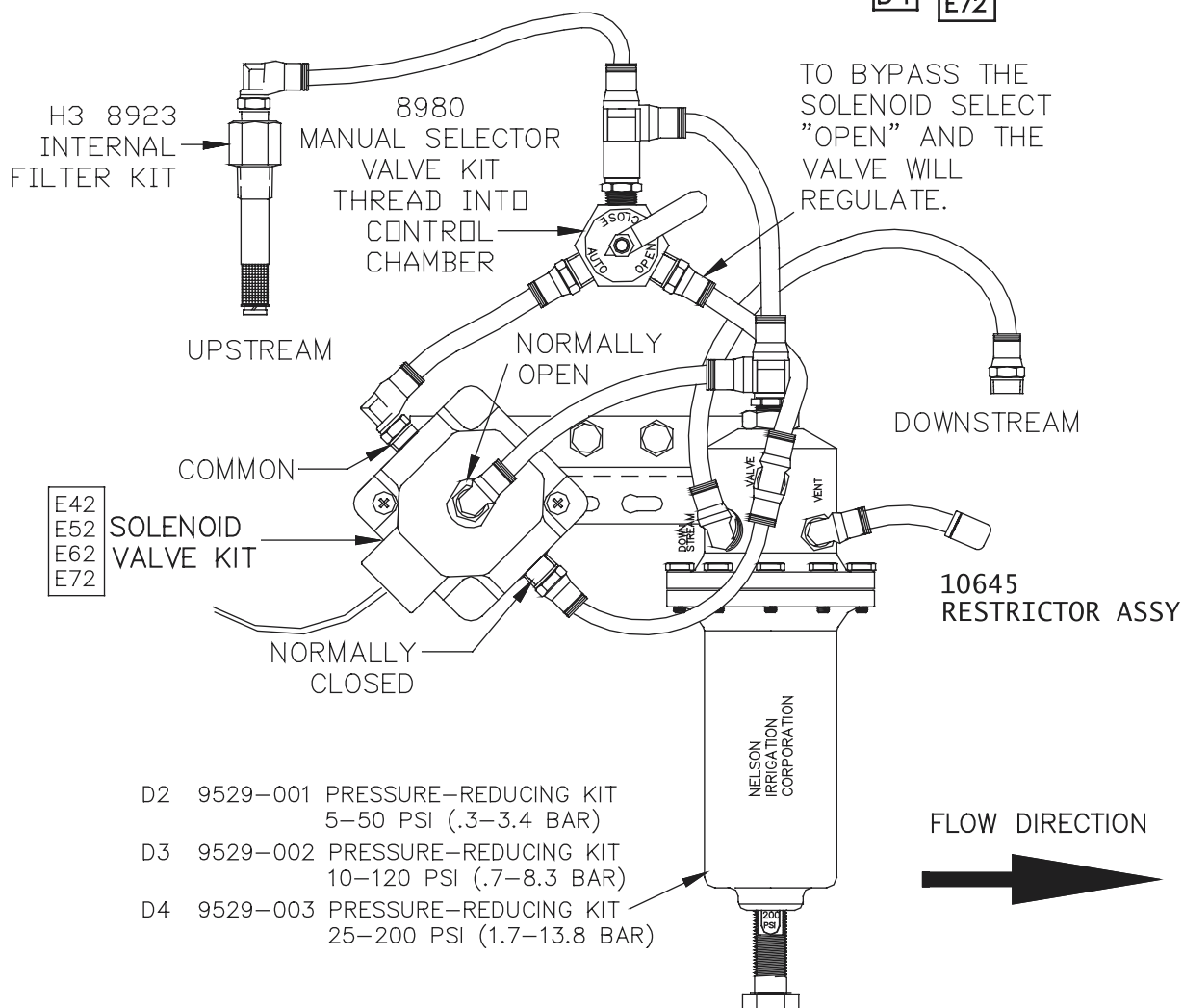
PRESSURE REDUCING WITH LARGE SOLENOID & INTERNAL FILTER

MODEL

D2
D3
D4

E42
E52
E62
E72

 H3



THE LARGE SOLENOID PORTS ALLOW THE PRESSURE CONTROL TO QUICKLY OPEN AND CLOSE THE MAIN VALVE AS REQUIRED TO MAINTAIN DOWNSTREAM PRESSURE.

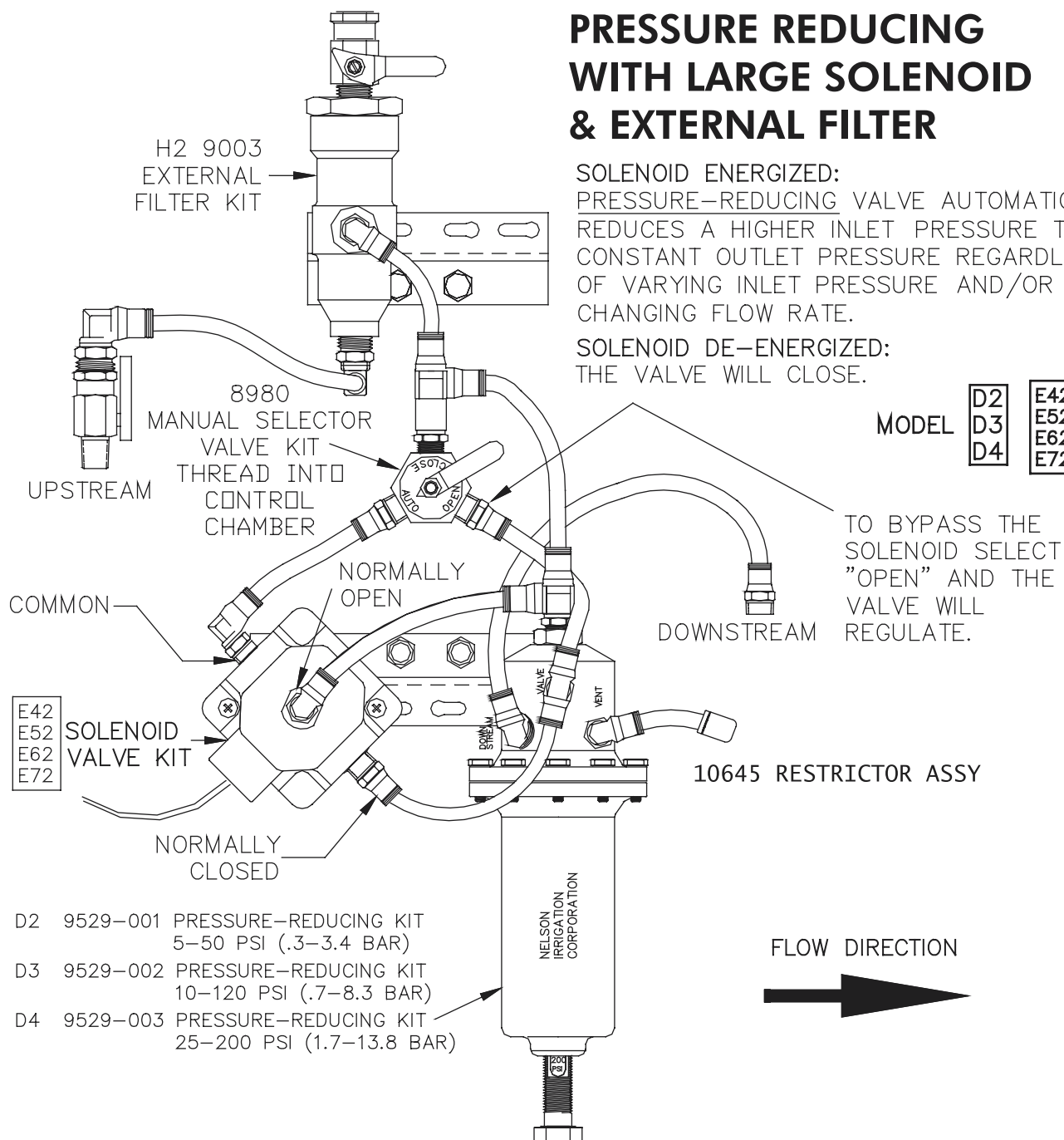
THE TWO-, THREE-, AND FOUR-INCH VALVE RESPOND FAST ENOUGH WITH THE SMALLER SOLENOID.

PRESSURE REDUCING WITH LARGE SOLENOID & EXTERNAL FILTER

SOLENOID ENERGIZED:
 PRESSURE-REDUCING VALVE AUTOMATICALLY
 REDUCES A HIGHER INLET PRESSURE TO A
 CONSTANT OUTLET PRESSURE REGARDLESS
 OF VARYING INLET PRESSURE AND/OR
 CHANGING FLOW RATE.

SOLENOID DE-ENERGIZED:
 THE VALVE WILL CLOSE.

MODEL	D2	E42	H2
	D3	E52	
	D4	E62 E72	



- | | | |
|----|----------|--|
| D2 | 9529-001 | PRESSURE-REDUCING KIT
5-50 PSI (.3-3.4 BAR) |
| D3 | 9529-002 | PRESSURE-REDUCING KIT
10-120 PSI (.7-8.3 BAR) |
| D4 | 9529-003 | PRESSURE-REDUCING KIT
25-200 PSI (1.7-13.8 BAR) |

THE LARGE SOLENOID PORTS ALLOW THE PRESSURE CONTROL TO QUICKLY OPEN AND CLOSE THE MAIN VALVE AS REQUIRED TO MAINTAIN DOWNSTREAM PRESSURE.

THE TWO-, THREE-, AND FOUR-INCH VALVE RESPOND FAST ENOUGH WITH THE SMALLER SOLENOID.

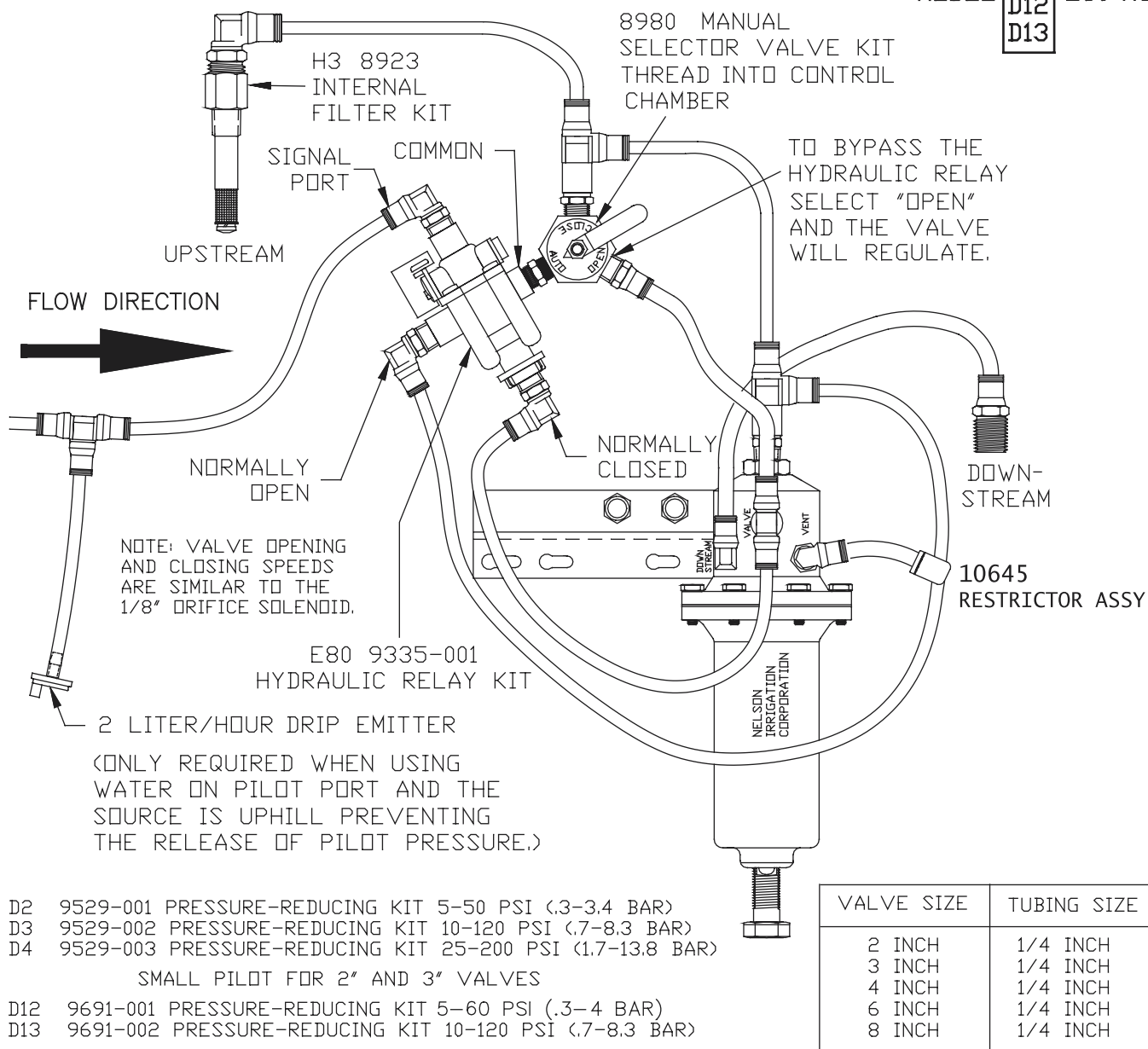
PRESSURE REDUCING WITH HYDRAULIC RELAY & INTERNAL FILTER

HYDRAULIC RELAY PRESSURIZED AT SIGNAL PORT: PRESSURE-REDUCING VALVE AUTOMATICALLY REDUCES A HIGHER INLET PRESSURE TO A CONSTANT OUTLET PRESSURE REGARDLESS OF VARYING INLET PRESSURE AND/OR CHANGING FLOW RATE.

HYDRAULIC RELAY NOT PRESSURIZED AT SIGNAL PORT: VALVE WILL CLOSE.

NOTE: SIGNAL PORT PRESSURE MUST BE EQUAL TO OR GREATER THAN UPSTREAM PRESSURE IN ORDER TO ACTIVATE HYDRAULIC RELAY CORRECTLY.

MODEL D2
D3
D4
D12
D13 E80 H3



- D2 9529-001 PRESSURE-REDUCING KIT 5-50 PSI (.3-3.4 BAR)
 D3 9529-002 PRESSURE-REDUCING KIT 10-120 PSI (.7-8.3 BAR)
 D4 9529-003 PRESSURE-REDUCING KIT 25-200 PSI (1.7-13.8 BAR)

SMALL PILOT FOR 2" AND 3" VALVES

- D12 9691-001 PRESSURE-REDUCING KIT 5-60 PSI (.3-4 BAR)
 D13 9691-002 PRESSURE-REDUCING KIT 10-120 PSI (.7-8.3 BAR)

PRESSURE REDUCING WITH HYDRAULIC RELAY/SOLENOID & INTERNAL FILTER

SOLENOID ENERGIZED: PRESSURE-REDUCING VALVE AUTOMATICALLY REDUCES A HIGHER INLET PRESSURE TO A CONSTANT OUTLET PRESSURE REGARDLESS OF VARYING INLET PRESSURE AND/OR CHANGING FLOW RATE.

SOLENOID DE-ENERGIZED: THE VALVE WILL CLOSE.

FAST RESPONSE FOR 6" & 8" SIZE VALVES

MODEL

D2
D3
D4

E24
E45

H3

